



# ARETÉ ST. BEDE'S CATHOLIC COLLEGE SIXTH FORM

Specialist Science and Sports College



“This college is very much aware of the fact that it is moulding future leaders. It is a doorway to a better future.”

Student

## Spiritual Life

A great education within a Christian community where every student is valued.

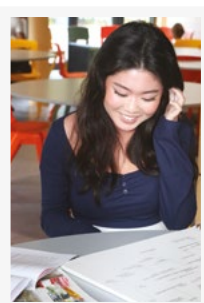
The character of our Sixth Form owes much to the spiritual teachings of Pope Francis and our patron St Bede. The Good News of the Christian Gospel underpins our core values at Areté where a high quality education is offered.

The development of the whole person as a spiritual being is important in the education of our young people. We seek to open the hearts and minds of all to see the merciful Christ within each other, and develop an understanding of the common good and a commitment to social justice.

It is our duty to guide each student's spiritual, moral, social and cultural development enabling them to grow in the knowledge that in God's eyes, each one of us is unique and of infinite worth. All students follow a Religious Studies programme which allows them to explore complex societal and religious issues. Spiritual and moral development lies at the heart of our work with students. Areté is a place where each student is valued, supported and well taught.

“This is an outstanding school because students are extremely proud of their Catholic college and wholeheartedly embrace the many opportunities provided for all to grow in faith. Leaders at all levels support and model the ethos of the school and are committed to ensuring that this is embedded in school life.”

Diocesan Inspection 2021



## Teaching and Learning

An outstanding college where students are encouraged to excel.

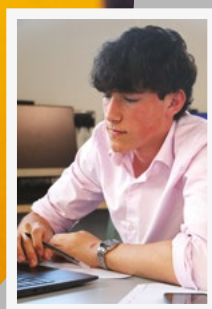
At Areté we strive for academic excellence by enabling students to achieve their full potential. Combining academic work with an extensive co-curricular programme prepares each individual for a full and rewarding life.

The college has a distinctive culture and climate where staff strive to promote a love of learning and intellectual curiosity. Our young people are valued, stimulated and challenged to develop their talents to the full, whatever their ability within a calm and industrious environment. High standards are expected from our students so that they become active, critical and open-minded thinkers. St Bede's is a place where achievement, effort and diversity are valued and celebrated.

Students are encouraged to take ownership of their learning and to track their own progress against challenging targets. Good conduct and industry are the expected standards during these important years of education. Working to be the best you can be is our aim and expectation for students and staff.

“Students in the sixth form say the school has high expectations of them.”

Ofsted 2021



## Curriculum

A climate where students discover a thirst for learning and a true passion for knowledge.

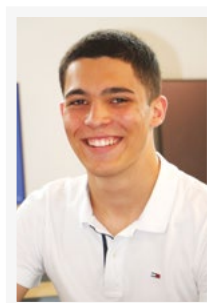
St Bede's offers a broad and balanced curriculum giving students the best possible advantage in preparation for their future, encouraging them to develop individual gifts and talents. It is designed and taught to bring about success in terms of external examinations, as well as opening avenues into wider learning.

A Level options on offer are largely those referred to as 'facilitating subjects' by the Russell Group universities. This study path equips students with the skills they need to access a range of competitive courses and increases their chances of study at the most respected academic institutions, if this is their desire. In addition, the Extended Project Qualification is available for those who seek to stand out and compete favourably with the best when applying to well-established universities.

There is immense support in college for the professional growth of teachers. Staff show an enthusiastic commitment to self-improvement, which sets a good example and in turn leads to better outcomes for students.

“The subjects provide a wide range of opportunities for all students. They are interested in their lessons and have outstanding attitudes towards learning.”

Ofsted 2021



## Pastoral Care, Support and Guidance

A caring community with student well-being at the heart of its work.

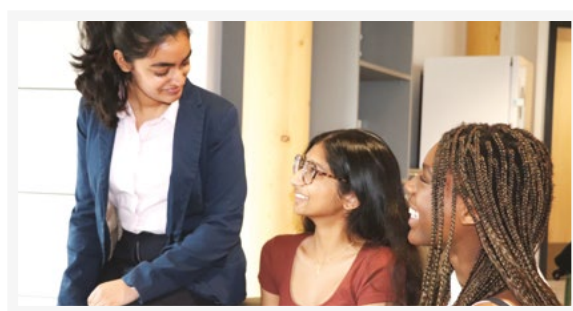
At Areté we want to ensure students are supported and valued. The ethos of the college is shaped by Christian principles of unselfish love, integrity and humility. Everyone can contribute towards creating this spirit throughout our community.

The welfare of the students is overseen by the form tutor, in collaboration with senior staff. Academic progress, health, attendance and well-being are monitored carefully to enable success. Mentoring, coaching and confidential counselling services are available and are valued.

In preparation for life after Areté, students are encouraged to develop presentation and debating skills and to address ethical, moral and political dilemmas in a mature and respectful manner. They are expected to engage fully in the whole life of the college and embrace leadership opportunities. Impartial guidance is given so that the right choices towards career pathways are made.

“Staff and students are supportive of each other, and well-developed pastoral programmes aim to support the wellbeing of all.”

Diocesan Inspection 2021



## An Enriched Learning Experience

Opportunities for all to experience activities which broaden horizons, developing leadership, resilience and confidence.

Because we believe in the development of the whole person, Areté offers a co-curriculum which enhances self-esteem, resilience, confidence, self-reliance, independence and leadership. As a community that inspires service, students are encouraged to put themselves forward for positions of responsibility and to engage in active learning outside the classroom. Duke of Edinburgh, debating, theatre visits, sport and foreign travel are all highly regarded by our young people.


The Sixth Form is at the forefront of our college and students are encouraged to take a role in facilitating clubs and activities for lower school and to mentor younger students.

A wide variety of activities and social events enrich and extend student life physically and socially. Balancing fun activities alongside study helps develop key life skills such as discipline, resilience and time management. Areté enriches and strengthens our whole community.

“The school is a vibrant place. Pupils have the opportunity to develop their talents and interests. At lunchtime, the school is abuzz with pupils playing sports, performing drama pieces and practising musical compositions. There are many opportunities for pupils to develop their leadership skills.”

Ofsted 2021





WE WELCOME VISITS TO OUR COLLEGE  
If you would like to book a place on a tour  
please email [sixthform@stbcc.org](mailto:sixthform@stbcc.org)

St. Bede's Catholic College,  
Long Cross,  
Lawrence Weston,  
Bristol BS11 0SU

Tel: 0117 3772200

Fax: 0117 3772201

Email: [contact@stbcc.org](mailto:contact@stbcc.org)

Web: [www.stbedesc.org](http://www.stbedesc.org)

Designed by The Mustard Agency